

Foster Carers Needed

Nexus Fostering in Ampthill is urgently seeking the people of Biggleswade to help local children by becoming foster carers. Right now, hundreds of children need a safe and caring home, and your support is vital in helping to address the shortage of foster carers.

Fostering is about providing care and support to children and young people who can't live with their birth families due to reasons like family breakdown, neglect, or abuse. Children need safe, loving homes where they can feel secure and grow. Nexus Fostering is looking for people who can help care for children of all ages but also:



- Sibling groups who need to stay together.
- Teenagers who may need extra guidance and support.
- Parent and child fostering to help young parents and their children.
- Unaccompanied asylum-seeking children who need a stable home.

Nexus Fostering is an Ofsted outstanding fostering agency, and foster carers are not left to navigate the journey alone. You'll receive continuous support from a friendly, dedicated team who are available 24/7, 365 days a year. This means that no matter the time or situation, you will always have someone to turn to for guidance, advice, or reassurance.

If you're interested in becoming a foster carer, the first step is to have an informal chat with a member of the team. This is your chance to ask any questions, learn more about what fostering involves, and see how you could make a difference in a child's life.

You can contact our Nexus Fostering office in Ampthill by calling 01462 431 774 or visiting our website at www.nexusfostering.co.uk. If you think you can make a difference, Nexus Fostering would love to hear from you.



Biggleswade Community Group exists to reduce isolation and draw attention to what help is available. If you know anything that we don't, tell us so that we can spread the word and tell others.



Email: editor@biggleswadecommunitynews.uk Tel: 01767 310163



SEASON'S GREETINGS

There are plenty of festive activities to choose from in this edition, something for everyone in Biggleswade this Christmas. Whether you are a family, a couple or just you there is no need to be lonely.

You are special and we are here for you!
Love Biggleswade Community Group

Published by Biggleswade Community Group 01767 310163

Email: admin@biggleswadecommunitygroup.org.uk

Grab a paper copy or you can read it online at
www.biggleswadecommunitynews.uk

WHAT'S ON - Some Christmas Events

**BANDS OF
BEDFORD BRASS**

14TH DECEMBER

*Christmas
Concert*

7.00pm



Trinity Methodist Church, Shortmead Street
Biggleswade SG18 0AP

Tickets £8.00 Children Free
Available on the door or call
07895 070 367




Refreshments including mince pies available.

Carol Singing!

Come and join us to sing Carols at The Bigg Theatre

Tuesday 17th December

11.15am - 12.15pm

with the Singers at the Bigg
All donations to The Bigg Theatre



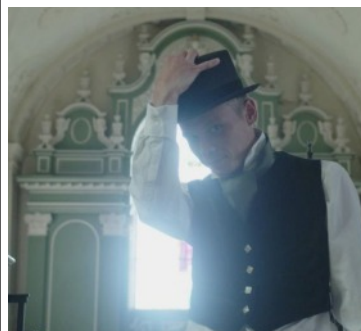
If you are involved with a local organisation, send us your updates each month and we will include them if space permits.

All This and More at
www.thebiggtheatre.co.uk



A Winter Union

Monday 9 December
Doors 7.30pm, Music 8pm



A Christmas Carol A Dramatised Reading

Sunday 22 December
Doors 6.15pm, Show 7pm



New Years Eve

7.30pm - 1.30am

UPDATES FROM OUR PARTNERS



FAB has achieved Fairtrade Community status for Biggleswade. Fairtrade Communities help to put a commitment to a fairer future at the heart of their local communities, actively supporting and promoting Fairtrade products and principles. By working together, the community encourages ethical consumption, raises awareness about social and environmental issues, and contributes to creating a positive impact on farmers and workers in developing countries through fair wages and sustainable practices.

Biggleswade Good Neighbours wish all their volunteers and clients a very Happy Christmas. Save the date of the morning of Saturday 18th January for our next coffee morning at Northfields Community Centre. They are always keen to hear from potential new volunteers, particularly those willing to offer lifts, DIY skills and befriending to our clients.

The BIGG Theatre hosts regular Community Activities. Details are here: www.thebiggtheatre.co.uk/classes-and-activities

Tuesdays : Chatty Tuesdays Weekly, 10.00am - 11.30am; Look for a table with a yellow sign, take a seat and stay for a natter.

Broadway Boogie Encore Weekly, 10.15am - 11.00am; a low impact, dance fitness class inspired by Musicals.

The Singers Weekly, 11.30am - 12.30pm; All female singers, and all voices welcome.

Chair Yoga Weekly, 1.00pm - 1.45pm; Take part seated, standing, or a mixture of both. Whatever's right for you. Check availability and book via the website, or message 07810032472

Wednesdays: Art Workshop Fortnightly, 12.00pm - 2.00pm; A small fee is charged, and all materials are included. Reservations required, message to book in: Facebook: Gomathy Cumarasamy or Instagram: @komathycumarasamy.

Fridays: Grief Café 10.30am- 12pm; offers a space where you can have a cuppa and a chat with others who are going through or have been through the grieving process too. Everyone is welcome.

Biggleswade Community Gardens have a social on Saturday 14th December, following gardening 10:30am until 12. We will be in Northfields Community Centre with tea, coffee and mince pies followed by an optional lunch at the Gardeners' Arms tapas bar, all welcome.

Biggleswade Community Group



Biggleswade Community Group We need more volunteers to offer support in the local community and organise events. We had a stall at the Christmas Light Switch On. www.biggleswadecommunitygroup.org.uk/

We work with these partners that have similar aims:-



Biggleswade Town Council provide funding to allow us to continue to print paper copies of this newsletter and offer it free of charge to our readers.



Future Action Biggleswade has achieved recognition for Biggleswade as a Fairtrade Community. fab@fabweb.org.uk www.fabweb.org.uk



Biggleswade Good Neighbours deliver this newsletter to their clients. Many are housebound and without Internet. A newsletter distributor for Upper Caldecote would be very welcome. It's no more than twenty locations. Tel 07771 104255 or email biggleswadegoodneighbours@gmail.com



A local group working to improve Biggleswade's green spaces and grow fresh food to share. Get in touch to learn more or join us. Email biggleswadecommunitygardens@gmail.com



Ivel Valley College Students distribute this newsletter to pickup points around Biggleswade. Contact Dean Hawkins - dean.hawkins@ivelvalley.beds.sch.uk - 01767 512080



The Bigg Theatre As well as events it hosts a variety of community groups, meeting needs in Biggleswade. www.thebiggtheatre.co.uk



Biggleswade Community Carnival Group is our newest partner. We look forward to working with them. www.biggleswadecarnival.co.uk

Trinity Methodist Church,
Shortmead Street, Biggleswade

'A Taste of Christmas'

Seasonal Soups,
Sandwiches
& Cake
with Tea or Coffee
A Seasonal Thought
Rev Leslie Noon

Thursday 5th December 12 noon

By Ticket only
Tickets £8.50

Available from
Biggleswade Express
Shortmead Street

BIGGLESWADE

Christmas

ADVENT MARKET

22ND DECEMBER

8:30AM TO 4:00PM

Find Gifts, Goodies, and
Glittering Lights!

BIGGLESWADE MARKET SQUARE

Brighten up your evening!!

WEIRD AND WONDERFUL

HISTORIES YOU WILL LOVE

Saturday 14th
December 2024 will
be the last in an
entertaining series
of talks by Kevin
Varty

pictures in the
parlour. the
history of the magic
Lantern, from its
invention in the
1650s, its peak in the 1860s, to its demise in
the 1950s. the evening ends with a
spellbinding recreation of a magic Lantern
show, using an authentic ancient Lantern
and 200-year-old glass slides. Kevin's
sense of humour will transport us back
two centuries in time

£5.00 per person, 8pm start, tickets available
at the bar

Still the best traditional beef pub in the area

east beds camra rural pub of the year 2024, east
beds camra pub of the year 2022 and 2023,
bedfordshire camra pub of the year 2022

The March Hare Brew Pub, 54 High Street, Duntun, Bedfordshire
SG18 8RN 01767 318121 janice.pritchett@outlook.com

Christmas

CAROLS WITH PHOENIX

MONDAY 16TH DECEMBER

7PM

FREE TO MEMBERS
NON MEMBERS £2 ON THE DOOR

Celebrate the spirit of Christmas with our enchanting
carol singing evening and to sing Christmas Carols with
our award winning special guests Phoenix Chorus.

Gather with family and friends to enjoy the timeless
melodies that echo the joy, warmth, and
love of the season.

Phoenix Chorus will also share and perform
their own Christmas Songs for you too.

MINCE PIES AND MULLED WINE AVAILABLE
PLEASE NOTE NO RESERVATIONS FOR SEATS
PLEASE ARRIVE EARLY TO AVOID DISAPPOINTMENT

Biggleswade Conservative Club, St. Andrew's Street, SG18 8BA

UPDATES FROM LOCAL ORGANISATIONS



Biggleswade Cub Scouting pack, Neptune are delighted to report that the monies raised by their 'Great Biggleswade Loo Push' back in February 2024, have funded a new toilet block for

Mafambisa care point.

The new toilet block has been built and the team from Biggleswade St Andrew's Parish Church, assisted in its construction.

Nick Gurney, Neptune Cub pack leader and member of St Andrew's Church commented, "We are delighted to hear and see the new toilet block at the care point in



Mafambisa, South Africa. We would like to express our thanks to the Biggleswade community for supporting this fund-raising. Without their generous support, this project could not have happened.

CHRISTMAS



We would love to see you at some stage over the Christmas period; whether you are alone or in a family.

We have been busy preparing and there is something for everyone at this special time of year. Both in our church buildings and at other venues around the Town. As well as church services there are activities for children and families plus carol singing at various places around the town.

<https://biggct.org/christmas24.html>



Bedfordshire Group - Alpine Garden Society

We have a short break now from "in person" talks, but we will resume in February 2025, when **Alice Hunter** will tell us all about the **Flora of Islands in the Med.**

Alice is a professional wildlife and landscape photographer and leads tours for several wildlife tour companies. So why not join us on a whistle stop tour of Cyprus, Sicily, Sardinia and Corsica in the Spring.

The meeting will be on **Saturday 22nd February 2025**, at **2.15 for 2.45 pm**, in the **Elgar Room** in the **Weatherley Centre**. **Note:** This is 15 minutes earlier than previously.

The cost per meeting for non-members is £5, which includes a cup of tea or coffee and biscuits. But, of course, you're more than welcome to join the group. Annual membership is £10 for a single member and £15 for joint membership and members pay only £2 per meeting.

To fill the gap from December to February, we are holding a series of on-line talks by ZOOM. For details of the speakers and subjects, and how to join these sessions go to our website:

www.bedfordshirealpines.com



Biggleswade History Society

Methodist Church, Shortmead Street, Biggleswade. Doors open 7.30 for 8 pm start, Non-members £4. No pre-booking required. biggleswadehistory.org.uk

Monday 2nd December 2024

David Duker - 'One of Our Own' tells the remarkable story of local Battle of Britain pilot, Victor Ekins. David is able to tell his amazing story as the Ekins family allowed David access to Victor's meticulously kept wartime diaries kept that lay unread for over 80 years.

Monday 6th January 2025

Natalie Doig - 'Weird in the Wade - Biggleswade's Mysterious Tunnels and other stories'. The award-winning podcaster brings her mysterious and spooky local historic stories.